

SKF SNH plummer block housings



Bearing types

- Self-aligning ball bearings
- Spherical roller bearings

Bearing dimension series

- 02, 03, 22, 23, 32

Shaft diameter range

- 25 – 160 mm

Typical shaft-bearing combination

- Plain shaft with bearing on an adapter sleeve
- Stepped shaft with bearing on a cylindrical seat

Seals

- Four Lip Seal
- Labyrinth Seal

Lubrication

- Grease

Materials

- Grey cast iron - FG 260 Grade
- Spheroidal graphite cast iron - 400/18 Grade

Mounting

- Two-bolt mounting
- Four-bolt mounting

Compliance to standards

- ISO 113
(two-bolt plummer block housings)

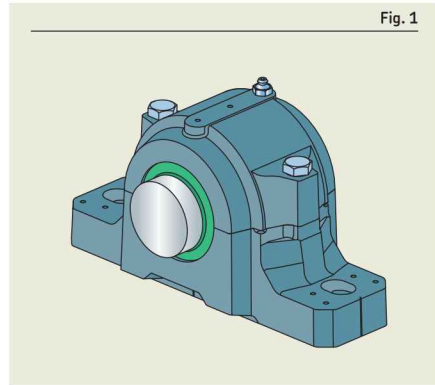
Paint

- Black (RAL 9005) - water based alkyd/acryl paint

SKF SNH plummer block housings

Standard housing design

SNH plummer (pillow) block housings in the 2, 5 and 6 series are split housings consisting of a cap and base (→ **fig. 1**). They have two holes cast into the base for attachment bolts. The housings are designed to enable a wider choice of bearings and seals as well as a variety of shaft-bearing combinations.

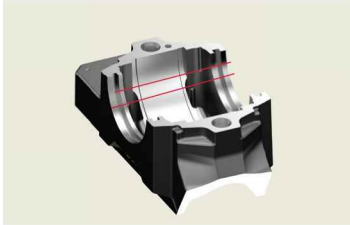


Design features



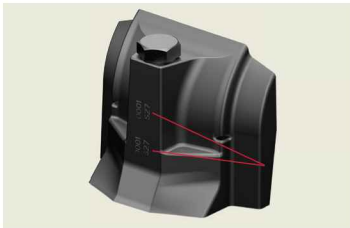
Dimples to locate accessories and improved lubrication facilities

Dimples cast into the housing cap indicate where grease fittings and condition monitoring sensors can be mounted for maximum effectiveness.



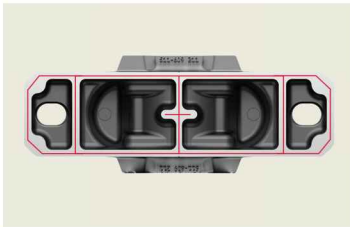
Grease level marking

To avoid over-filling, markings at each corner inside the housing base indicate the proper grease level for an initial 20% or 40% fill of the free space between housing and bearing.



Improved markings on the housings

The housing cap and base are individually marked. The serial number in both the parts helps avoid mismatch. The enhanced designation on the housing cap improves readability & traceability



Better heat dissipation

There are additional ribs in the base at sides and center which increases the contact area between base and the support surface. This reduces operating temperatures and increases the service life of the bearings, seals and lubricant.

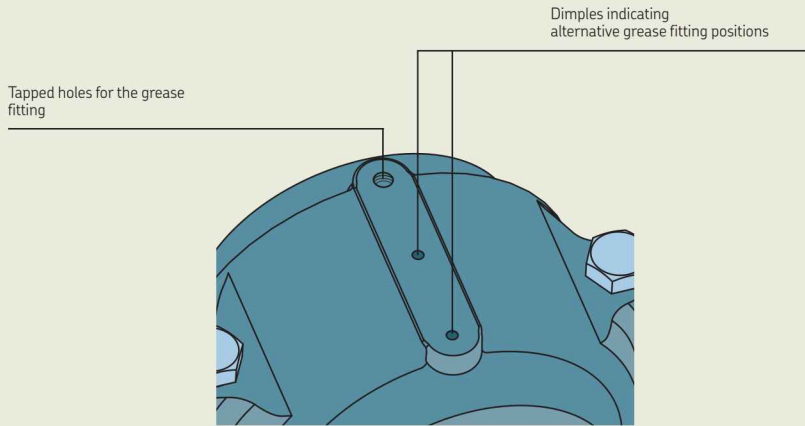


Simple mounting and dismounting

To simplify mounting and make alignment more accurate, lines indicating the centre of the bearing seat and housing bore axis are cast into the housing base. Dimples indicate the position for dowel pins.

Fig. 2

SNH housing up to size 218 or 522



SNH housing from size 524 and above

